

**MANITOBA METIS FEDERATION – MATRIX  
SOLUTIONS INC. PARTNERSHIP**

**INDIGENOUS CONSTRUCTION MONITORING**

**WEEKLY REPORT**

**SPREAD 7**

**OCTOBER 15<sup>TH</sup> TO OCTOBER 20<sup>TH</sup>**

## **1. PURPOSE OF THIS REPORT**

The report is a weekly summary of the daily reports submitted by the Indigenous Construction Monitors that are working on spread seven. The social and cultural findings have been tabulated with locations and mitigation measures below. A summary of the construction activities has been summarized for the weeks of October 15<sup>th</sup> to October 20<sup>th</sup>, 2018.

### Social and Cultural Features

Field Observation	# of occurrences	Description and Mitigation Measures	Mitigation Status	Further Action Required (Yes/No)
Traditional Use Area (hunting, fishing, gathering, trapping)	N/A			
Rock Formations (rocks of significance, tipi rings, etc.)	N/A			
Artifacts	N/A			
Bones	N/A			
Potential Gravesites	N/A			

### Environmental Features

Field Observation	# of occurrences	Description and Mitigation Measures	Mitigation Status	Further Action Required (Yes/No)
Medicinal or Cultural Plants	1	Rare plant – Ricca Flutians Crystalwort SF51 (KP884+700)	10 m buffer	
Aquatic Life	1	SF52)SSKP 886+900) WF-112 ,WF-113 – Northern Leopard Frog	Area identified	
Animal Observations or Burrows	1	SF52(SSKP 886.03+887.34) WF-110		

		The ducks unlimited Canada log cabin project		
Bird Nests	N/A			
Trees (Red Willow)	N/A			
Wetlands	7	Seasonal Marshes(class 3) Wetland areas MB103 SF51 (KP884+900); MB104, SF51 (KP885+000); MB-038(KP 828+800); SF 52 MB-113(SSKP 888+100); SF 54 MB-121 (SSKP 892+000)  semi permanent marsh (class 4) wetland complex - MB-1039; MB-110 SF52 (SSKP 886+500)	Cleaning of equipment before entering SF51, Ramp built to cross SF50 to SF51  At MB-113(SSKP 888+100) & SF 54 MB-121 (SSKP 892+000), geotech down and ramp built to cross wetland.	
Watercourse Crossing	1	SF 52 (SSKP 888+400) Wetland Crossing:MB-114 Ephemeral temporary marsh (class1/ class2 )		

N/A

### **Additional Observations and Summary of Activities or Concerns**

On October 15<sup>th</sup>, safety theme identified, slips, trips, falls, wildlife, congested sites, ensuring cell service is in range if working alone, and ensuring contact with supervisor/senior monitor on your location; Environment: +7 degrees Celsius outside today, follow all biosecurity. At SF51 Rare plant identified, Ricca Flutians Crystalwort (KP884+700), with 10 meter buffer established. Two Wetland areas were monitored (SF51 (KP884+900) & SF51 (KP885+000), banister was cleaning equipment before they could enter SF51, building ramp to get from SF50 to SF51. At SF38 (KP863+600), Banister crew was monitored bending pipe moving eastwards down the ROW. At SF25(KP833+900) Banister coating crew monitored, taking note how clean the site was.

On October 16<sup>th</sup>, safety theme identified slips, trips, falls, weather, wildlife. Contact information for Medic's- Camp(1-780-329-9183) & Emergency Number (911) discussed & ensuring cell service is in range if working alone, and ensuring contact with supervisor/senior monitor on your location. Environment: +4 degrees Celsius outside, UV index 3 or moderate, follow all biosecurity. At SF 8 (818+200), monitored Banister separating the topsoil from the clay, with geo-tech covering the topsoil and the clay on top of it. At SF (823+500), monitor noted Banister has pig pens set up to filter out silt as water is being pumped from the trench where the pipe going to be installed into the penned area. At SF22 (KP 829+000) monitored Banister's hydro seeding machine. This piece of equipment mixes mulch seed, and fertilizer together with water. Which is then sprayed on to the ground it goes on as a paste and usually looks green in colour it is a fast and effective way to reseed large areas. The mulch is spread to help the soil in place and to allow the seed to take root. At SF38 (KP863+400) Monitored Banister's Beveling Crew. cleaning up after they were done beveling the pipe.

On October 17<sup>th</sup>, safety theme was ensuring contact information for Medic's- Camp(1-780-329-9183) & Emergency Number (911) was known, cell service is in range if working alone, and ensuring contact with supervisor/senior monitor on your location. Environment: + 12 degrees Celsius outside, UV index 3 or moderate, follow all biosecurity. MB-038 Wetland monitored at KP828+800, At KP858 +328, monitored Banister pumping water out of the trench to install bore pipe under the roadway. At KP 865+400 Banister main welding crew monitored on SF39.

On October 18<sup>th</sup>, safety theme was ensuring contact information for Medic's- Camp(1-780-329-9183) & Emergency Number (911) was known and ensuring contact with supervisor/senior monitor on your location. Environment: +21 degrees Celsius, UV index 3 or moderate, follow all biosecurity. At SF 6 (SSKP 816 +700) monitoring of Banister tie end crew whom complete the last welds performed on the line and fill in and connecting any gaps left in the pipeline. Photo taken of the tie-in crew(below). At SF 6 (SSKP 817 +500) noted Banister has a pig pen set up between sf 6 and sf 7. The purpose of having this pig pen is to pump the water from the trench inside the pig pen with a cloth filter to keep silt from going onto the land. At SF 9 (SSKP 818+400) monitored Banister tie-in crew is working around a hot line area, noting water continuing

to be a problem for the crew. Monitor notes that the crew did a good job of protecting the Wetland area: MB-1039 semi permanent marsh (class 4) wetland complex.

At SF 41 (SSKP 867+900) monitored Banister main welding crew working towards sf 42, noting the crew is doing "a amazing job of house keeping".

On October 19<sup>th</sup>, safety theme safety theme was ensuring contact information for Medic's- Camp(1-780-329-9183) & Emergency Number (911) was known and ensuring contact with supervisor/senior monitor on your location. Environment: +10 degrees Celsius, UV index 2 or low, clean and disinfect your vehicle before going in restricted area. At SF 52 (SSKP 888+100) monitored Banister stripping the topsoil by the Wetland MB-113. This wetland is a seasonal marsh (class3) They also laid down some geo-tech on the wetland and build a ramp to get across the wetland with out doing any damage to the marsh. Monitored SF 52 (SSKP 888+400) Wetland Crossing: MB-114 Ephemeral temporary marsh (class1/ class2 ), SF 54 (SSKP 892+000), wetland Area MB-121 seasonal marsh (class3) wetland complex, & SF54 (SSKP892+300) wetland area MB-121 seasonal marsh wetland complex. Monitored Banister building a ramp to cross the wetland area and also hauling clay to get the ramp build. They also have geo-tech laid down on the wetland.

On October 20<sup>th</sup>, safety theme safety theme was ensuring contact information for Medic's camp- 1-780-329-9183, Emergency 911 and nearby Virden Hospital (204) 748-1230, as well as making sure the job sites are nice and clean. Environment: +2 Degree Celcius, UV index 2 or low, follow all bio security. Clean and disinfected your vehicle before going in restricted areas. Monitor identified SF52 (SSKP 886+900) Wildlife Feature WF-112 ,WF-113. This area is a northern leopard frog over wintering waterbody. Northern leopard frog was observed at dugout located 30 meters north of the constructed ROW and the area is very well identified. SF52 (SSKP 886.03+887.34) Wildlife feature identified WF-110. The ducks unlimited Canada log cabin project is crossed by the construction ROW. SF52 (SSKP 886+500) Wetland area MB-110. This is a semi permanent marsh (class 4) wetland complex.

## Photos of Sites Visited & Topics Discussed This Week



SF50 (KP 884+000)

This is where Banister building a ramp to cross SF 50 to SF51.  
PHOTO TAKEN FACING WEST



SF51 (KP 884+900)

This is where WETLAND AREA:MB-103 is located. SEASONAL WETLAND MARSH.  
PHOTO TAKEN FACING SOUTH



SF50 (KP 884+000)

This is where Banister doing a cleaning on the equipment SF 50



SF25 (KP833+900)

This is banister coating crew. This is the site that's so clean after they move along with the coating. PHOTO TAKEN FACING WEST



Photo



SF 28 (818+200)

This is where banister doing a good job of separating the topsoil and the clay.  
PHOTO TAKEN FACING WEST

Photo



SF16 (KP 823+500)

This is where they will need a pig pen to pump water from the trench to the pig pen.  
PHOTO TAKEN FACING EAST

Photo



SF 22 (KP 829+000)

This is what it looks like after the hydro seeding mulcher is done.  
PHOTO TAKEN FACING EAST

Photo



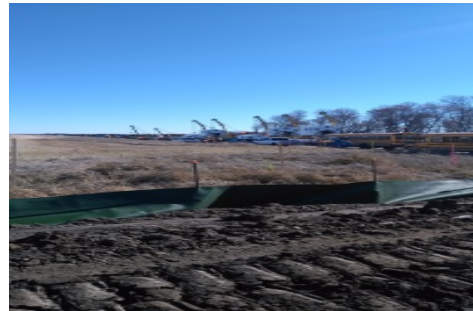
SF 22 (829+300)

This is what they call a HYDRO SEEDING MULCHER. PHOTO TAKEN FACING EAST



SF ( 858 +328 )

This is where banister pumping water out of the trench.  
Photo taken facing west



SF 21 (828 +328 )

This is the wetland area MB-038 seasonal marsh wetland complex  
Photo taken facing east





SF 6 (SSKP 816 +700)

Banister tie-in crew  
Tie-in crew is responsible for filling and  
connecting  
Photo taken facing west



SF 6 (SSKP 817+500)

This is the filter inside the pig pen  
Holds the silt in the bag  
Photo taken facing south



SF 9 (SSKP 818+400)

This is the area where banister are working  
around the hot line area  
Photo taken facing east



SF 52 (SSKP 888+400)

Wetland crossing  
MB-114 Ephemeral /temporary marsh  
(class 1/class2)  
Photo taken facing east.



SF54 (SSKP 892+300)

Wetland MB-121  
Seasonal marsh wetland complex  
This is where banister hauling clay  
Photo taken facing east.

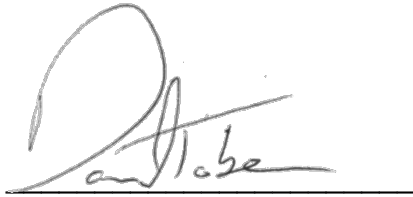
## APPROVALS



Arnold Breland  
Construction Monitor

November 13, 2018

Date



Daniel Tober  
Senior Environmental Scientist

November 13, 2018

Date